

Mid-Century Modern

7242 Demens Drive S • St. Petersburg, FL 33712

Offered for \$598,950

4 Bedrooms • 2-1/2 Baths • 2 Car Garage

Built 1969 • 2,877 square feet

139' x 125' Lot • Screened Pool



www.PinkStreets.com

This spectacular example of Mid-Century Modern Frank Lloyd Wright-inspired architecture has had new life breathed into it over the last three years. Careful attention to detail, high end upgrading and restoration have resulted in your opportunity to own a very special and artistic home in a very special neighborhood.

Soaring ceilings, walls of glass and the sensation of bright, open space are hallmarks of this design style (bring the

outside in). A large living/dining space adjacent to the stylish kitchen focuses on a broad wood-burning fireplace with unique surrounding features.

The centrally located kitchen showcases the home's style, with solid maple hand-crafted cabinetry and stainless steel appliances. Designer lighting and fixtures are among the features here. A pass-through counter offers casual dining space as well.

There's a separate sunken family room for relaxing in front of the tv, or taking in the view of the xeriscaped landscaping and pool through large windows. A covered lanai area with sliding glass doors allows the indoors to flow with the out of doors for superb entertaining or enjoyment of the screened pool.

A large Master suite features a private side terrace and a bath with a hand-crafted larger shower. There's a large bedroom and walk-in closet. A dressing area separate from the bath is a nice feature. All of the baths, including this one, have been upgraded with custom vanities, Italian marble shower walls and counter tops, and designer hardware, fixtures, mirrors and lights.

The Pink Streets is a unique established neighborhood that's part of Greater Pinellas Point. Just steps away from this home, you'll enjoy expansive city parkland along the waters of Tampa Bay. There's a community boat ramp, recreation facility and park just down the

street. You'll appreciate being just minutes from award-winning beaches and Ft. DeSoto Park.

Incredibly easy access to the interstate is a real plus. Vibrant downtown St. Petersburg is just a ten minute drive, and you can be at Tampa International Airport in just over a half hour. Or, head south over the Sunshine Skyway Bridge in a snap.

If you appreciate distinctive design, see this house for yourself today!



The kitchen features solid maple hand crafted cabinetry, designer lighting, and a dining bar open to the great room.



The great room has vaulted ceilings and a spectacular fireplace. There's also a spacious family room (below).



Office 727.898.2582
E-mail: info@SimmsTeam.com

Coastal Properties Group International
238 Beach Drive NE | St. Petersburg, FL 33701



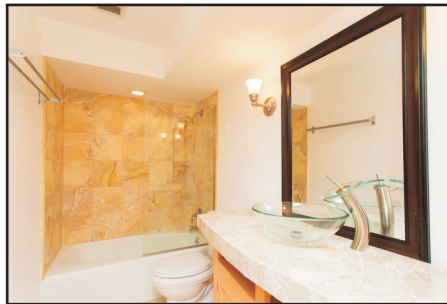
www.SimmsTeam.com

Details At-A-Glance:

- Vaulted ceilings in main living area with walls of glass for light and air
- Wood-burning fireplace with built-in mantle & display space
- Master suite has large bedroom with private terrace, Master bath with a beautiful, artistic large shower, walk-in closet, separate dressing area
- Front bedroom or office has new blonde vertical bamboo flooring
- Kitchen features solid maple hand crafted cabinets, Franke stainless steel sink and hardware, stainless appliances
- All bathrooms have custom vanities, Italian marble shower walls and designer tiles, European hardware, designer mirrors & lights, soft-close toilets, new exhaust fans
- Florida friendly and professionally landscaped, with banana, papaya and avocado trees
- Swimming pool with birdcage screen enclosure, safety fencing
- Covered lanai features new Kashmir Red Slate flooring
- Oversize 2 car garage with automatic opener (laundry in garage, Samsung front-loading washer & dryer convey)
- Water softener and new hot water heater
- New paint and stain inside and out
- Sprinklers operate with well water, pump recently replaced
- Metal roof on main house, repaired and flat roof replaced 2012 (15 year life span, better than average)
- New internal & exterior doors throughout, including Pella Thermo Star sliders
- Openable windows all new, Vetter and Anderson in period style
- Playhouse & swing convey
- Optional Pinellas Point Civic Association \$20/year
- **2017 Taxes \$7,872 with no Homestead exemption**



The large Master suite has an artistic bath and opens to a private side terrace.



Two other spacious bedrooms and a hall bath are on the opposite side of the home.



You'll enjoy the outside - a wide lanai and screened pool plus two side yards.



City-maintained park land just steps away meanders along Tampa Bay.

ROOM DIMENSIONS:

Living/Dining Room: 19' x 21'-7"

Family Room: 20'-8" x 18'

Kitchen: 8'-10" x 14'-7"

Master Bedroom: 16'-2" x 18'-1"

2nd Bedroom: 11'-11" x 17'

3rd Bedroom: 11'-11" x 15'-8"

4th Bedroom: 12'-7" x 11'-4"

Marketed by

THE
SIMMS
TEAM

Office (727) 898-2582

E-Mail: info@simmsteam.com

Coastal Properties Group International
238 Beach Drive NE, St. Petersburg, FL 33701



Take a visual tour of this home and others at www.SimmsTeam.com