

# Bayfront Tower on Beach Drive

**1 Beach Dr. SE #1911 | St. Petersburg, FL**

**Offered for \$1,000,000**

2 Bedrooms + Office | 2 Baths  
Balcony  
1 Garage Space | 1,945 sq ft | Built 1975

Community Pool & Amenities

**[www.1BeachDriveSE.com](http://www.1BeachDriveSE.com)**



Welcome to Bayfront Tower! The original Beach Drive address, this is a very special building in a premier location. This unit faces west, offering city and sunset views. With two en suite bedrooms and a generous office, there's plenty of space. A foyer



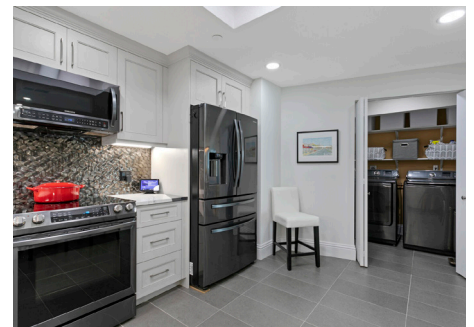
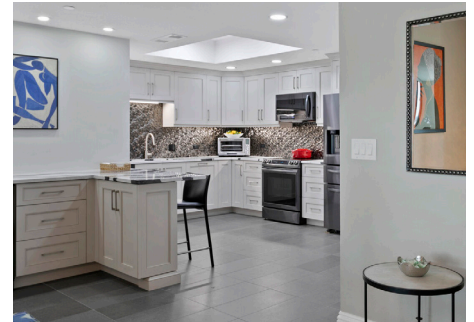
leads you into the living areas with maple hardwood floors, and you're drawn immediately to the floor-to-ceiling windows.

You'll appreciate the kitchen, beautifully remodeled with solid wood cabinetry, Cambria quartz countertops, a bar area with wine refrigerator, and a proper laundry room! The bedrooms are split, offering privacy for each, and have dressing areas with generous closet space. The primary bedroom and the living room have sliding glass doors to a balcony.

The building offers unparalleled amenities, including 24 hour concierge and valet parking. The entire 28th floor is a community space with stunning views of Tampa Bay that you can enjoy anytime you like. There's a state-of-the-art fitness center, billiard & game room, library, card rooms, party space with a catering kitchen and a rooftop swimming pool. Both floors have 360 degree wrap-around pedestrian walkways. There have recently

been \$12 million in upgrades to the common elements.

The downtown location is priceless, surrounded by museums, galleries, restaurants, shops, the Pier and miles of waterfront parkland.



**COASTAL**  
properties group  
INTERNATIONAL



Marketed by  
**The Simms Team**  
727-743-6262



THE  
**SIMMS**  
TEAM

**[www.SimmsTeam.com](http://www.SimmsTeam.com)**



# Details ...

## INTERIOR FEATURES

- Wide entry foyer with two closets
- Maple hardwood floors in main areas
- Office features built-in desks and storage
- Living areas and balcony face west for ideal sunset views
- Blinds in the living room and bedrooms are electric
- Kitchen features solid wood cabinetry, Cambria quartz countertops, under-cabinet lighting, a bar area with beverage fridge, "Titanium" finish Samsung appliances
- Laundry room features Samsung washer and dryer

## ASSOCIATION INFORMATION

- \$1,495.59/month condo dues, plus \$435.37 special assessment through 2027
- Pets allowed, 2 max, 1 dog
- 12 month rentals allowed
- Storage locker is in an air conditioned room down the hall
- Fees include water/sewer/trash, cable tv, pest control, building maintenance/roof, building insurance and reserves.
- Amenities include 24 hr concierge service, valet parking, rooftop pool, outdoor grills and walking track, 28th floor amenity level with fitness center and sauna, billiards, card rooms, library, gathering space and catering kitchen.



The primary bedroom has a private bath and two separate closets.



The second bedroom also has a private bath.



The balcony offers views in multiple directions.



You'll love all of the building's amenities!



See more photos and information at:

[www.1BeachDriveSE.com](http://www.1BeachDriveSE.com)



Marketed by  
The Simms Team  
727-743-6262



THE  
SIMMS  
TEAM

[www.SimmsTeam.com](http://www.SimmsTeam.com)