

Allendale Terrace Mid-Century Modern

700 35th Ave. N, St. Petersburg FL

Offered for \$700,000

4 Bedrooms | 2 Full Baths | 2,174 sq ft

Built 1959 | 79 x 134' Fenced Corner Lot

2 Car Garage & Workshop

Large Swimming Pool

www.AllendaleTerraceMCM.com



Playfulness. Elegance. Harmony.
This is what you'll experience when you step inside this spacious, single-story Prairie Style Mid-Century Modern home situated on an oversized corner lot in desirable Allendale Terrace. It's ready to be lovingly renewed and



taken to the next level. Featured in the City of St. Petersburg's *Design Guidelines for Historic Properties*, stylistic aspects include a low-pitched roof, wide overhang, asymmetrical window and door details, and rows of windows flanked by low masonry planters which emphasize the horizontal design intent of the period. Original, fun retro surprises such as groovy in-wall night lights and vintage light fixtures will make you smile.

The interior flow is easy and open. Large, sliding glass doors allow you to effortlessly enjoy indoor/outdoor living. The home is inviting, yet incredibly private; from its strategic window placement and elevation preventing passers-by an easy view inside, to the fenced rear yard and lush landscaping giving you a peaceful poolside oasis to enjoy – or to entertain in.

The neighborhood is an absolute charmer with mature, tree-lined streets (many of them brick) showcasing other special, historic custom homes. Have peace of mind knowing you're

not in a flood zone! This tucked away gem is just minutes by car to shopping, dining, I-275 or to vibrant downtown St. Petersburg. **Don't miss your chance to own this special piece of architectural history and make it your forever home.**



COASTAL
properties group
INTERNATIONAL



Marketed by
The Simms Team
727-743-6262



THE
SIMMS
TEAM

www.SimmsTeam.com

Details ...

INTERIOR FEATURES

- Large kitchen with rolling butcher block-topped island, pass-through to family room
- New stainless steel Whirlpool refrigerator, Samsung dishwasher
- Neutral wood-look plank ceramic tile floors throughout
- Vintage "nightlight" features in hall and bath (Groovy!)
- Family room features sliding glass doors to the lanai
- Primary bedroom suite features large walk-in closet, sliding glass doors to the pool area
- Hall bath with tub updated 2016
- Wide hallways and doorways
- Ample storage space throughout, including a large entry closet

EXTERIOR FEATURES

- Roof replaced in 2020
- 16' x 30' Landmark salt water pool redone in 2018
- Polaris pool cleaning system
- Oversized 2 car garage with workshop and lots of storage
- Washer & dryer in garage convey
- Mature trees and shrubs, most of which are native specimens meaning low maintenance and nominal pest control
- No irrigation system, drip hoses only
- Side double-gate access for RV / boat / trailer parking

SYSTEMS/MISC

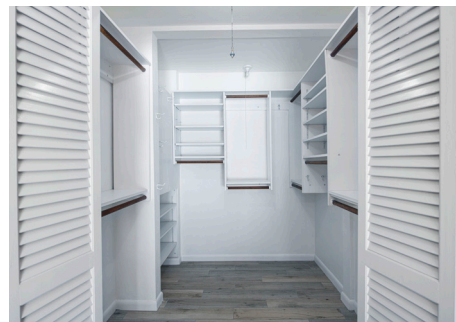
- HVAC replaced 2011
- Natural gas furnace heat and natural gas water heater



The home sits on an oversized corner lot in a beautiful neighborhood.



The primary bedroom suite has a private bath and large walk-in closet.



The kitchen / family room area is spacious and opens to the pool.



You'll love the fun vintage features found throughout the home!



See more photos and information at:
www.AllendaleTerraceMCM.com



Marketed by
The Simms Team
 727-743-6262



THE
**SIMMS
 TEAM**

www.SimmsTeam.com