

Modern Showplace

**1000 Brightwaters Blvd. NE
St. Petersburg, FL 33704**

Offered for \$999,000

4 Bedrooms | 3 Baths | Open Parking

Built 1960 | 3,206 sq ft

109' x 158' Corner Lot



www.SnellIsleHome.com

Before the “great room” plan was cool, Mid-Century modern architects introduced homes like this designed with the intention of opening up interior spaces and bringing the outdoors in. This impressive home captures you from the first moment. Sleek lines, walls of glass, vaulted ceilings and an open floor plan are hallmarks of the style that you’ll find here.



The home flows smoothly from its central living area with dramatic ceiling details to a dining area with built-in seating on one side, and casual space on the other with a wall of French doors opening to the pool area.

The kitchen is a show-stopper, with handsome granite counters and rich wood cabinetry accented by stainless steel. It’s a functional space, with dual islands, tons of counter and storage space, a built-in desk area and two separate casual dining counters.

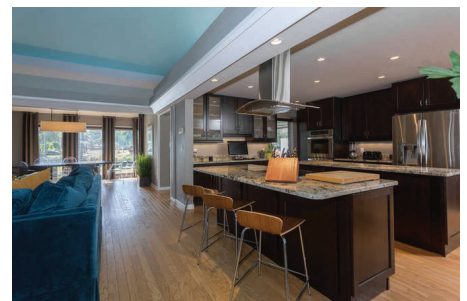
The Master suite and a guest bedroom are on one side of the house, with a wing added in 2013 on the opposite side having two bedrooms and a full bath.

You’ll be surprised how private the outdoor space is, with a huge side yard, and rear access for off-street parking. You’ll also enjoy the location, in a desirable mature neighborhood just minutes from downtown and waterfront parks along Tampa Bay.

Make an appointment today to see this outstanding Snell Isle home for yourself.



Outside, the large pool has a paver deck with several areas to relax - there’s a built-in fire pit and an outdoor grill area. Around the corner is an outdoor shower, and a detached building that’s got perfect light for an artist’s studio, writer’s retreat or workout space.



COASTAL
properties group
INTERNATIONAL



Marketed by
The Simms Team
727-898-2582

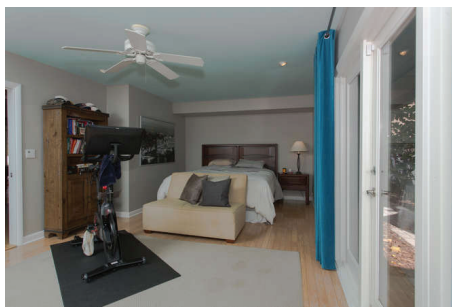


CHRISTIE'S
INTERNATIONAL REAL ESTATE

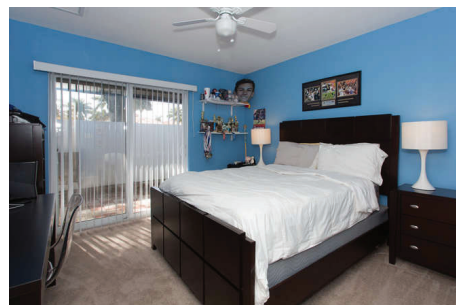
www.SimmsTeam.com

Details ...

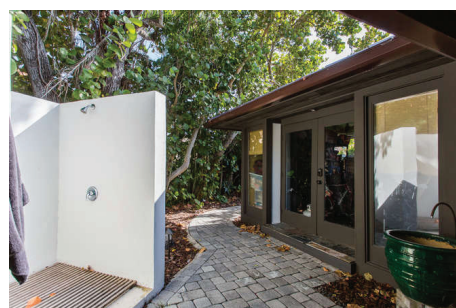
- New metal roof installed 2017
- Entry foyer flanked by fountain and rain chain ceramic barrel
- Living room with fireplace and vaulted stepped ceilings
- Dining area features built-in bench seating
- Light oak flooring throughout main living areas
- Large kitchen with granite counter tops, wood cabinetry, stainless steel appliances
- Inside laundry/utility room with skylight and extra refrigerator
- Pantry area with two wine refrigerators (they do convey)
- Bonus room currently used as game room and media area, with French doors to outside
- Pool with paver decking and pathways to various areas for covered and open relaxing
- Built-in fire pit
- Outdoor shower
- Outdoor built-in propane grill and casual dining counter
- Detached artist studio/workout room with A/C unit
- Large fenced side yard
- Sprinkler system on city water
- Rear-access parking for 3 cars
- 2017 property taxes \$11,022 with homestead exemption
(Property Appraiser website can estimate new owner's taxes)
- Snell Isle Neighborhood Association \$25/year optional



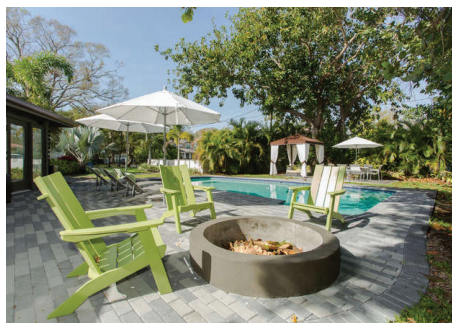
The Master suite features a private bath and large walk-in closet



These two bedrooms have sliding doors opening to a private walled patio.



Bonus spaces inside and out offer room for everyone to enjoy.



The outside space is incredible, with a large pool, fire pit, outdoor grill and there's still an expansive side yard and rear-access parking.

See more photos and information at:
www.SnellIsleHome.com



Marketed by
The Simms Team
727-898-2582



CHRISTIE'S
INTERNATIONAL REAL ESTATE

www.SimmsTeam.com